

3D Ferb



ASSEMBLY INSTRUCTIONS

Time to complete: Approximately 30 minutes Level: Medium

GETTING STARTED

MATERIALS:

- Scissors
- Glue
- Ruler
- Butter knife
- Pencil
- 2 or more sheets of heavyweight paper

1 Print out pages 1 and 2 and allow to dry.

2 Score all pieces: Using a ruler as a guide, run the back side of a butter knife firmly along all dotted lines.

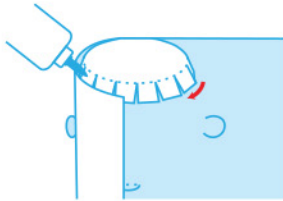


3 Using scissors, cut along solid grey lines.

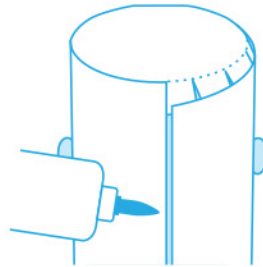


ASSEMBLE YOUR CHARACTER

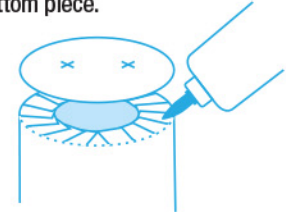
4 Before you make Ferb's body, gently pop out his ears, mouth, and sleeves. Next, fold over the top of the body piece and all of the tabs. Apply glue to each of the tabs. Starting at the forehead, carefully glue each tab to the inside of the body piece.



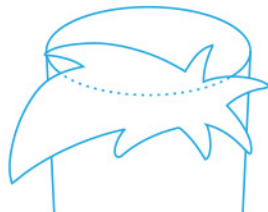
5 Glue the seam together on the back of the head and down the length of the body.



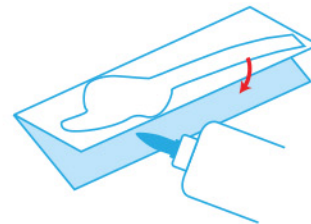
6 Fold over all of the tabs on the bottom of the body piece. Gently poke a pencil through the two "X"s on the bottom piece to make two holes for the leg pieces. Apply glue to tabs on the bottom end of Ferb and attach the bottom piece.



7 Glue the top portion of the hair piece to the top of Ferb's head and gently fold down the remaining portion over his forehead.



8 Fold both of the arm pieces in half and glue together. Cut out arms along solid lines.



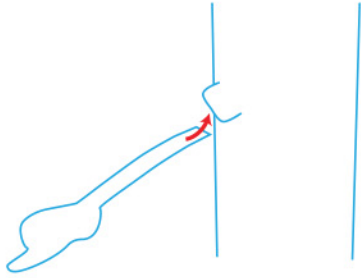
Watch Phineas and Ferb on Disney Channel!

DisneyChannel.com/Holiday

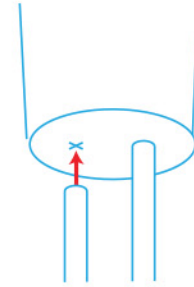
©Disney

ASSEMBLY CONTINUED

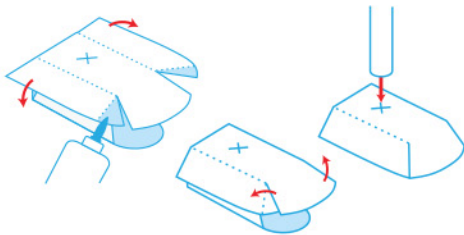
- 9** Glue the arm tabs to the inside of each sleeve on the body piece.



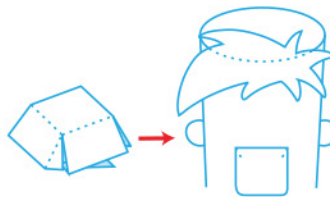
- 10** To create legs, first fold each piece on the score line, then roll into a thin tube (slightly smaller than the width of a pencil). Apply a strip of glue inside the edge of the roll and hold in place until dry. Insert the legs into the leg holes on the bottom piece. Add glue to secure.



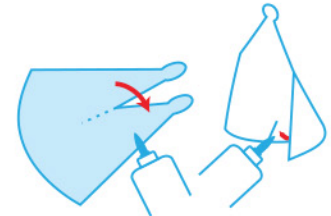
- 11** Gently poke a pencil through the "X"s on the shoe pieces. Line up the front edges of the shoe to the edge of the shaded area and glue. Fold the side tabs under and glue to the inside panels.



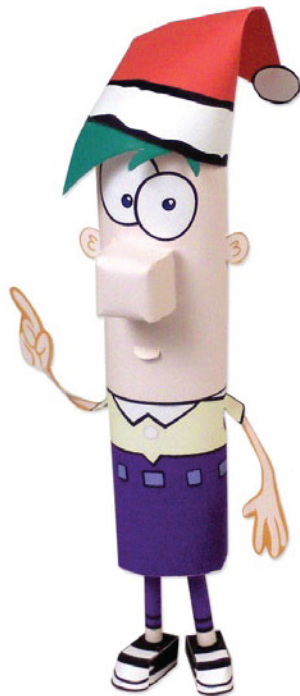
- 12** Create Ferb's nose by folding along all of the score lines and gluing the tabs in place to form a cube. Glue Ferb's nose to his face, directly under his eyes.



- 13** Fold the hat piece in half and glue together the top portion (above the score line). Wrap the bottom edges of the hat around and glue in place at the line. Place on Ferb's head.



- 14** You're done!

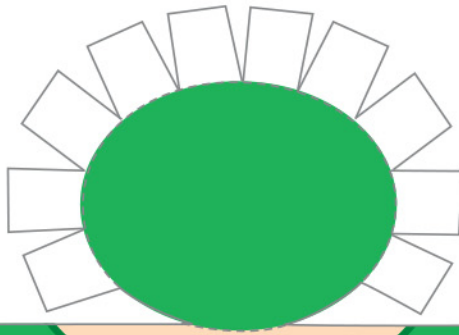


Watch Phineas and Ferb on Disney Channel!

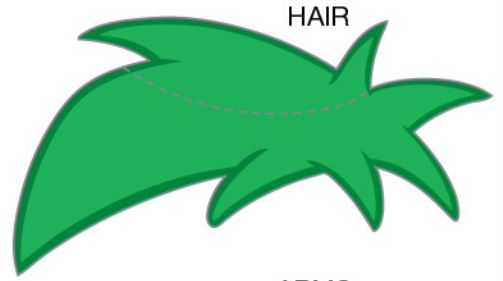
DisneyChannel.com/Holiday

©Disney

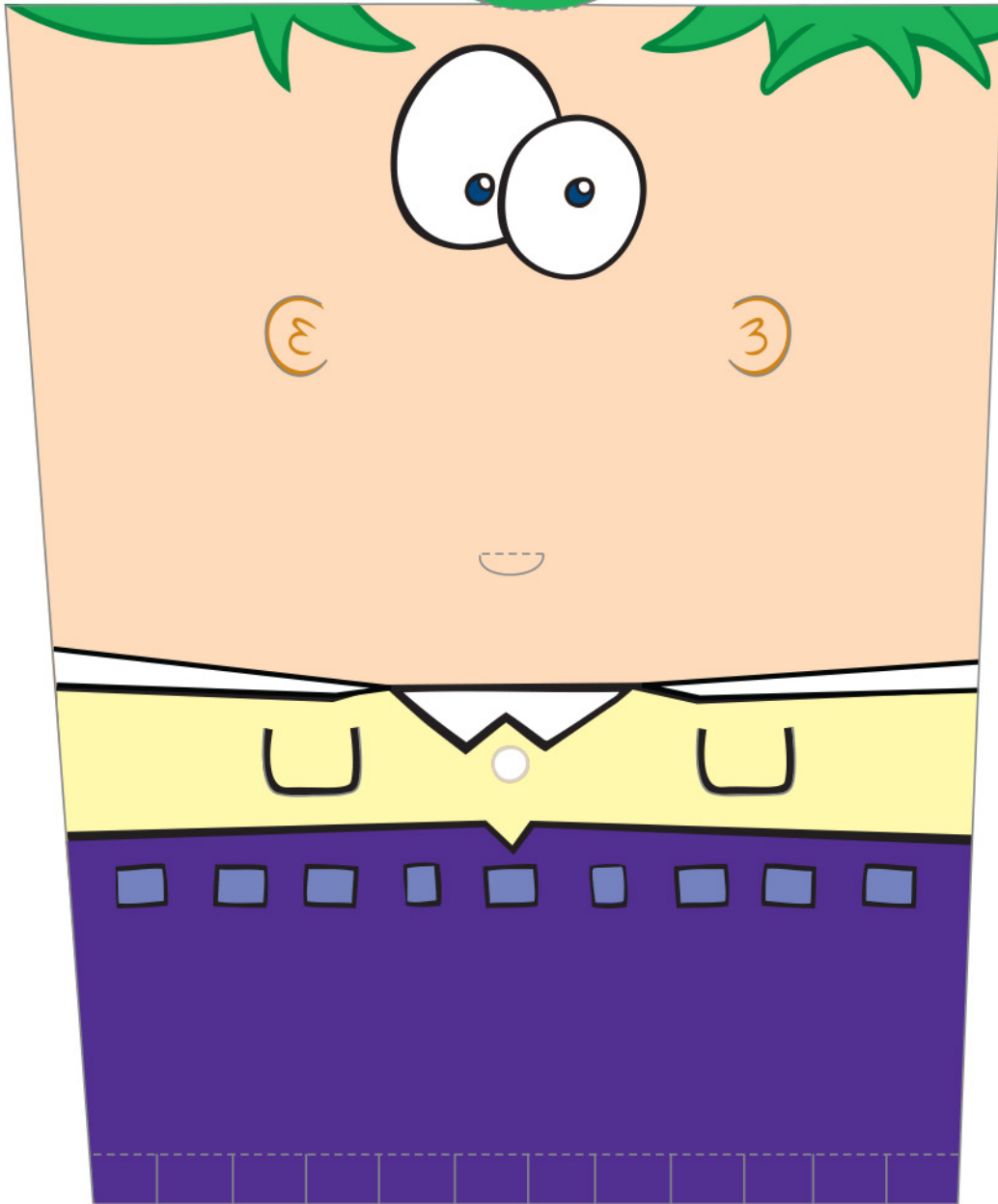
3D FERB CHARACTER



TOP

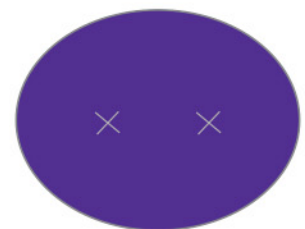
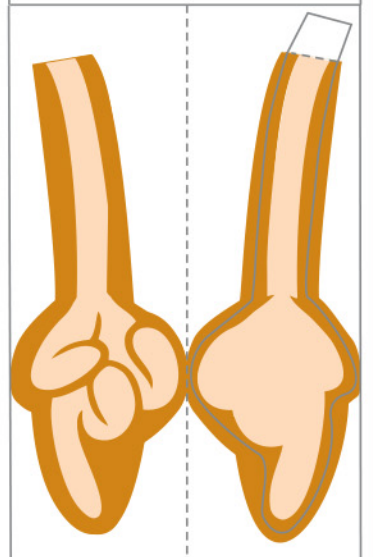
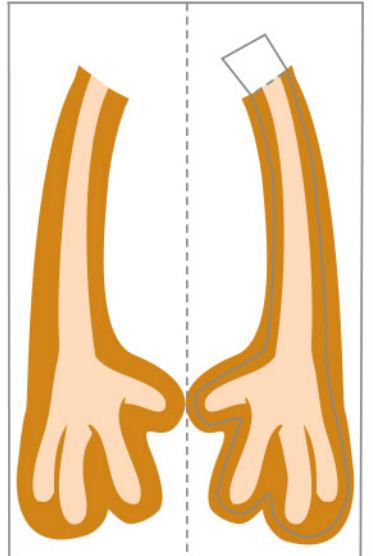


HAIR



BODY

ARMS



BOTTOM

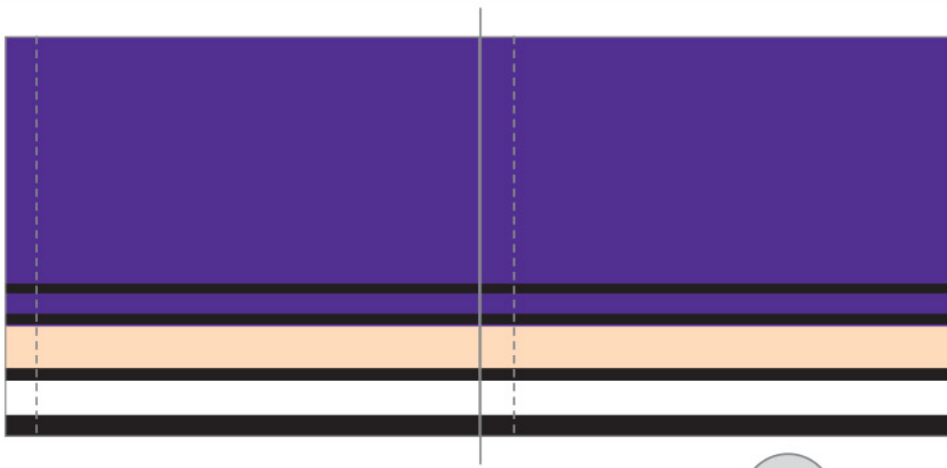


Watch Phineas and Ferb on Disney Channel!

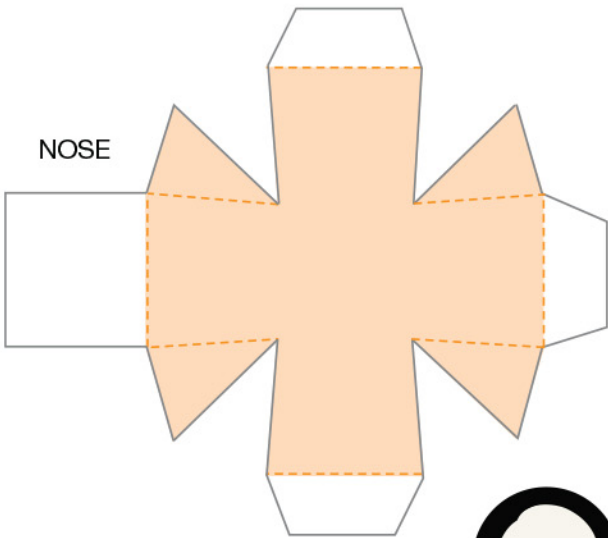
DisneyChannel.com/Holiday

3D FERB CHARACTER

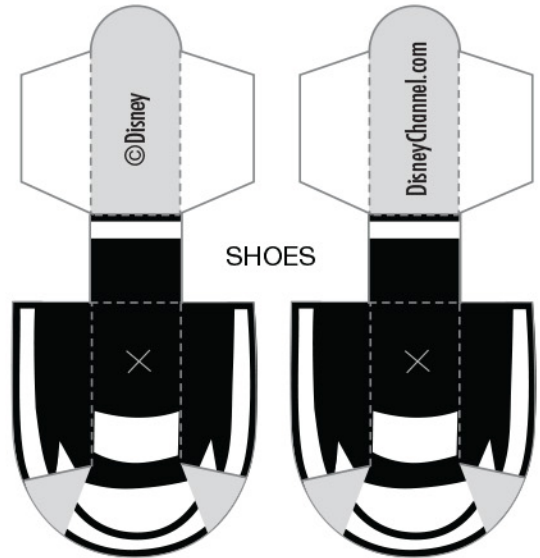
LEGS



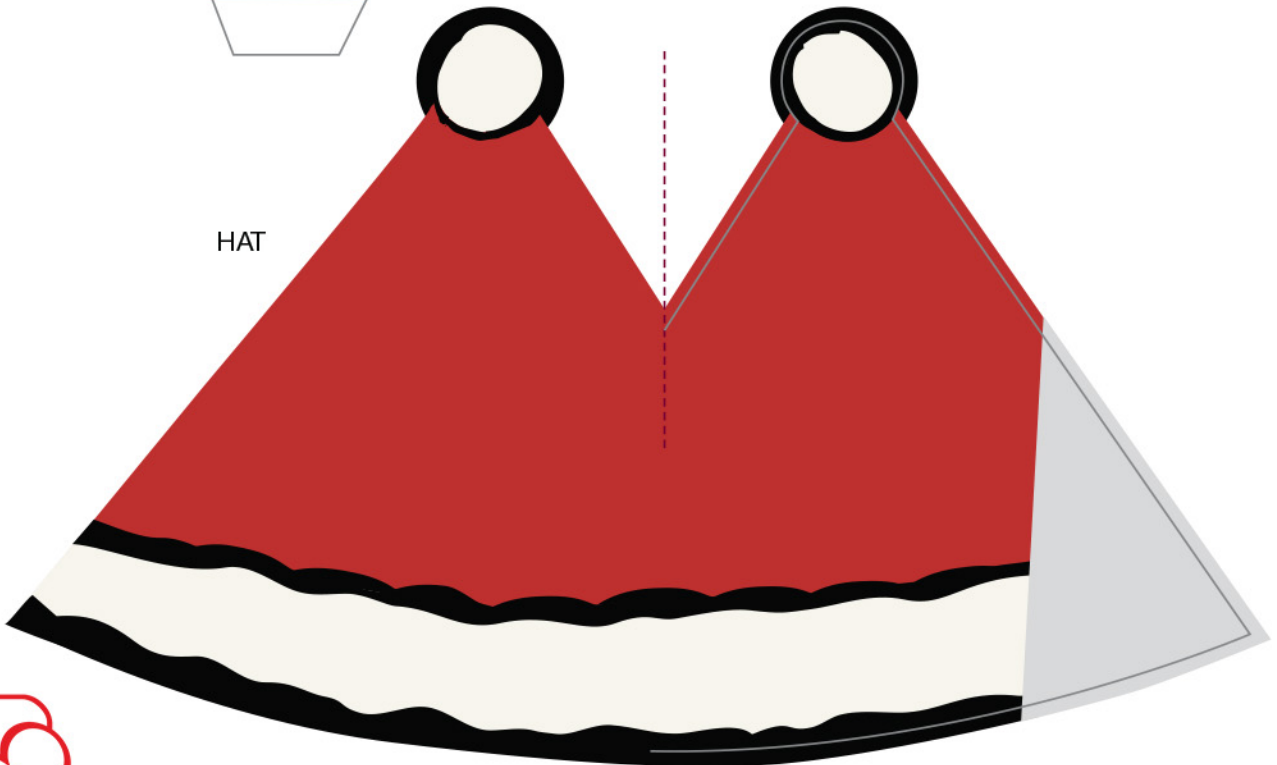
NOSE



SHOES



HAT



Watch Phineas and Ferb on Disney Channel!

DisneyChannel.com/Holiday

©Disney