



MAKE YOUR OWN

# EL CHUPACABRA CAPE



## YOU WILL NEED:

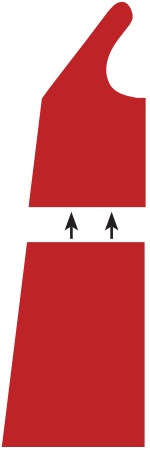
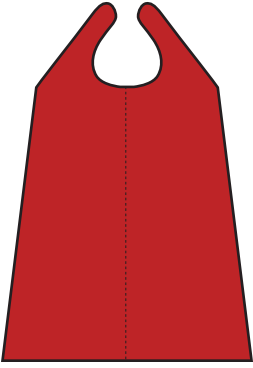
Red Felt Cape Fabric (Up to one yard), Felt Cape Fabric (Up to one yard multiple colors yellow, green, white), Felt Symbol Fabric (Multiple colors red, black, yellow), Printer, Scissors, Non-toxic Glue, Velcro.

## DIRECTIONS

1. Download and print the templates on the following pages. Have an adult help you cut out all the pieces of the template.
2. Tape the top and bottom pieces of your cape template together. Fold your red felt in half and trace the cape template shape onto the felt. Cut through both sides, so you will wind up with a whole cape.
3. Have an adult help you cut your cape template again along the yellow lines to make the additional background colors, then fold your felt fabrics and trace on green, yellow and white. Have an adult help you cut these pieces from the felt.
4. Have an adult help you cut the symbol templates from the following pages. Trace each piece on the indicated color of felt, black, yellow and red.
5. Cut a piece of velcro about 2 inches long. Attach one side to the top of the right side and attach the other side to the bottom of the left side.
6. Lay the cape flat on a tabletop and layer the background colors and symbols on top, glue all the pieces together and let dry.

ON BLU-RAY™ COMBO PACK  
& DIGITAL HD NOVEMBER 19

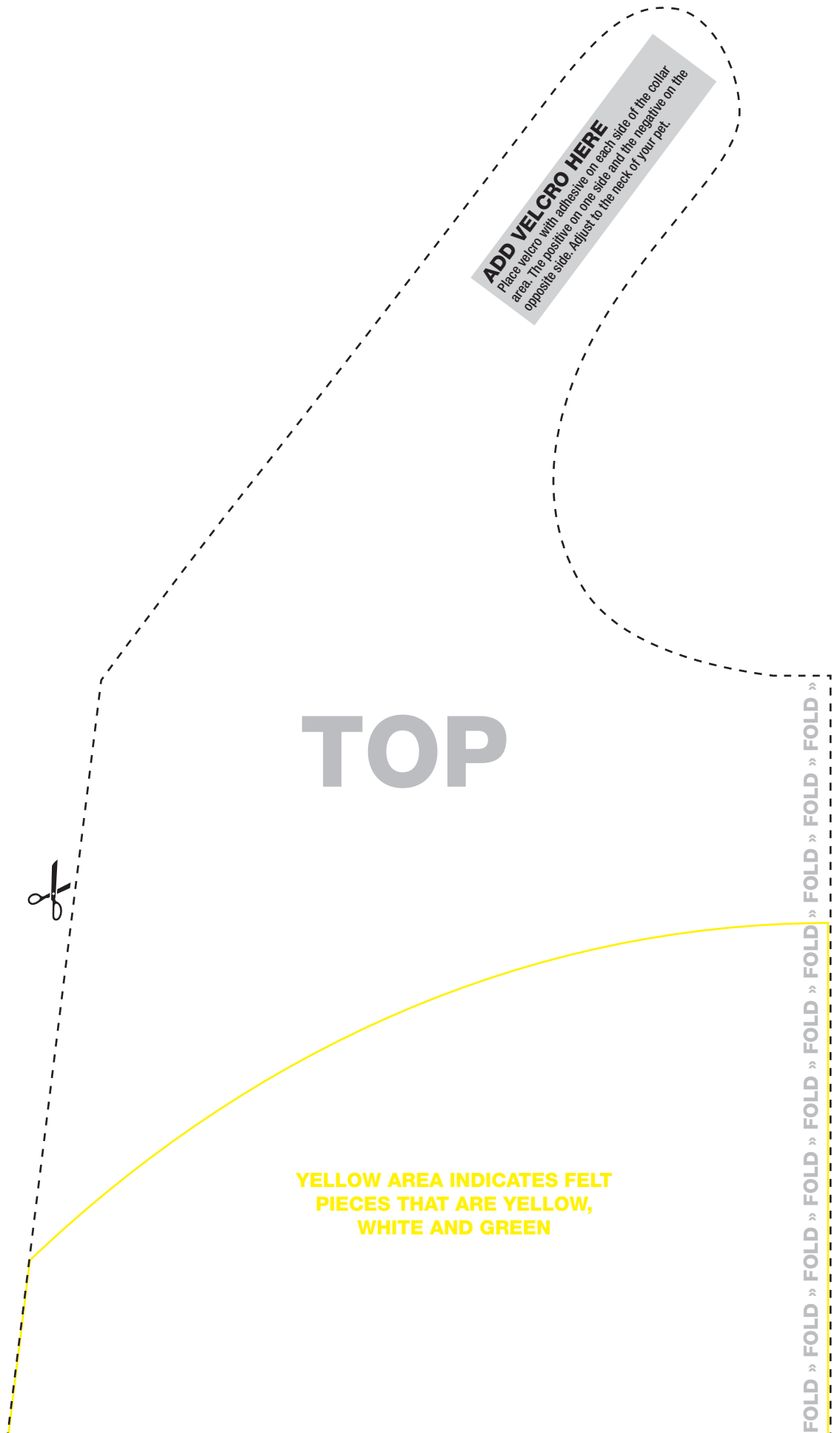




**CAPE**

Tape paper together before using as a pattern.

Black dashed lines represent the cape and yellow solid lines represent the three cutouts for the additional background colors.



**YELLOW AREA INDICATES FELT PIECES THAT ARE YELLOW, WHITE AND GREEN**





**SYMBOLS**

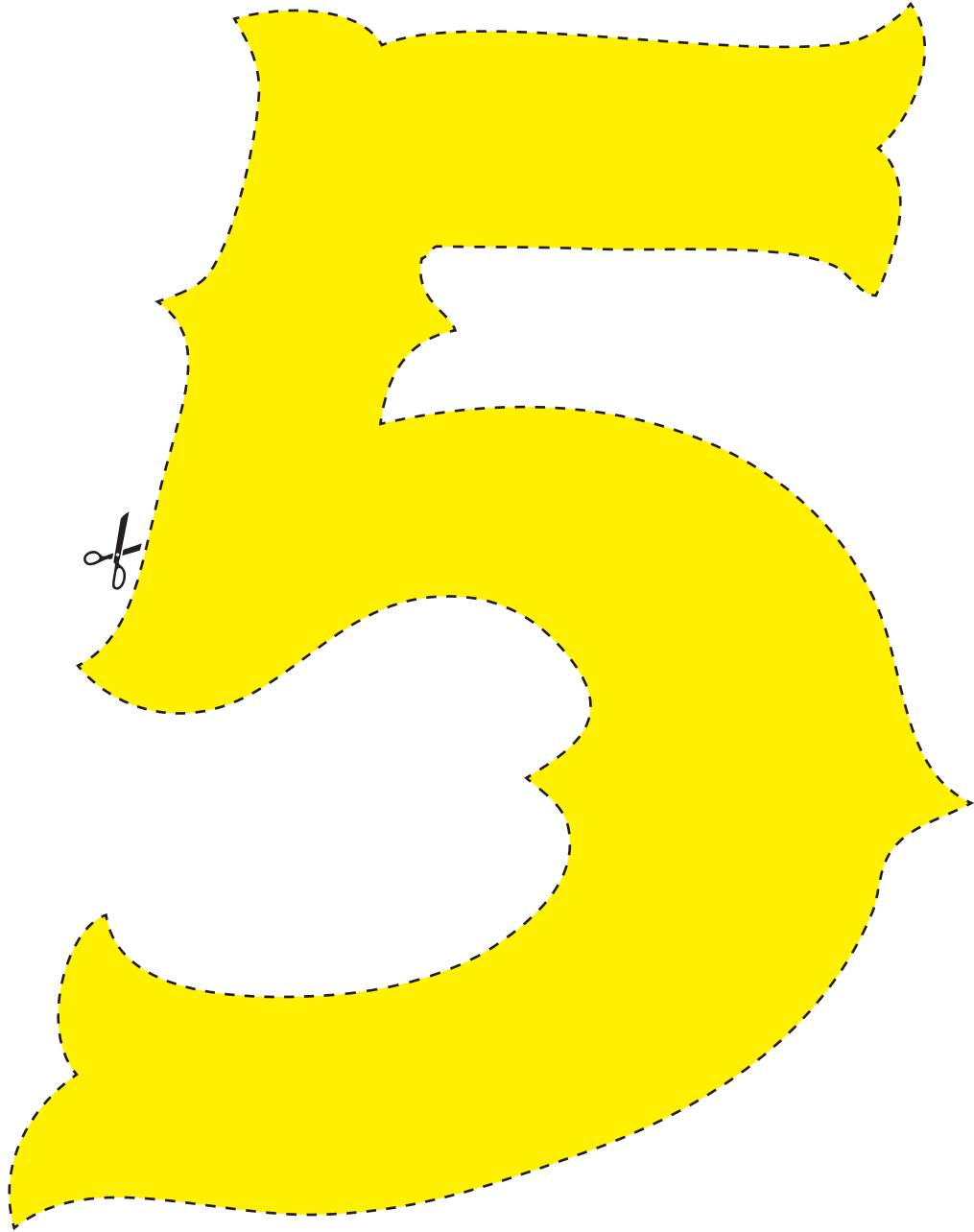
The symbols are slightly different sizes.  
Layer the yellow on the black and the  
red on the yellow.





**SYMBOLS**

The symbols are slightly different sizes.  
Layer the yellow on the black and the  
red on the yellow.





**SYMBOLS**

The symbols are slightly different sizes.  
Layer the yellow on the black and the  
red on the yellow.

